

## Group Index

<b>General</b>	<b>Technical Specifications Adjustment and Assembly Data Conversion Tables</b>	<b>00-1 00-2 00-3</b>	<b>Measuring Runs Lubrication and Maintenance Optional Extras</b>	<b>00-4 00-5 00-6</b>	<b>00</b>
<b>Engine and Engine Suspension</b>					<b>01-24</b>
<b>Clutch</b>					<b>25</b>
<b>Transmission</b>					<b>26</b>
<b>Pedals</b>					<b>29</b>
<b>Control Adjustments</b>					<b>30</b>
<b>Springs and Shock Absorbers</b>					<b>32</b>
<b>Front Axle</b>					<b>33</b>
<b>Rear Axle</b>					<b>35</b>
<b>Wheels and Tires, Adjustment of the Wheels</b>					<b>40</b>
<b>Propeller Shaft</b>					<b>41</b>
<b>Brakes</b>					<b>42</b>
<b>Steering Assembly</b>					<b>46</b>
<b>Fuel System</b>					<b>47</b>
<b>Exhaust System</b>					<b>49</b>
<b>Radiator</b>					<b>50</b>
<b>Underside Chassis Protection, Trailer Coupling</b>					<b>52</b>
<b>Electrical System</b>	<b>Engine Equipment and Instruments Body</b>	<b>15 54 82</b>			<b>15/54/82</b>
<b>Body</b>					<b>61-97</b>
<b>Cleaning, Care and Car Finish</b>					<b>98</b>
<b>Special Tools</b>					<b>100</b>

# P r e f a c e

The present complete edition of the Workshop Manual for Model 190 which was announced in the preliminary edition of June 1957, continues our series of workshop manuals designed to help you in carrying out repairs properly, and in determining the causes of trouble.

The arrangement of the various groups has been changed to correspond as far as possible to the layout of our Spare Parts Lists. With regard to page numbering, however, we have continued the previous system of numbering each section separately, which facilitates the filing of supplementary sheets.

All individual subjects have been dealt with comprehensively and in great detail so that this volume serves not only as a workshop manual for Model 190 but also as a basic handbook for all our other passenger cars with a chassis base panel. A second volume will contain supplements on all other models, describing all features that differ from those of Model 190.

Where the terms left, right, front, or rear occur in the text, they should be interpreted as seen in the direction of travel.

An index has been added to facilitate reference to individual sections and repair procedures.

For the first time, we have listed parts which can be installed later on the customer's request. Furthermore, a list of all recognized optional extras has been included, which should make it easier for you to give your customers satisfactory expert advice.

It is our intention to continue and extend our practice of publishing changes in design in additional supplementary sheets, in order to keep the Workshop Manual as up to date as possible.

These supplementary sheets should be filed in the Manual in the appropriate section, and the list of supplementary sheets should be brought up to date with the help of the gummed strips supplied.

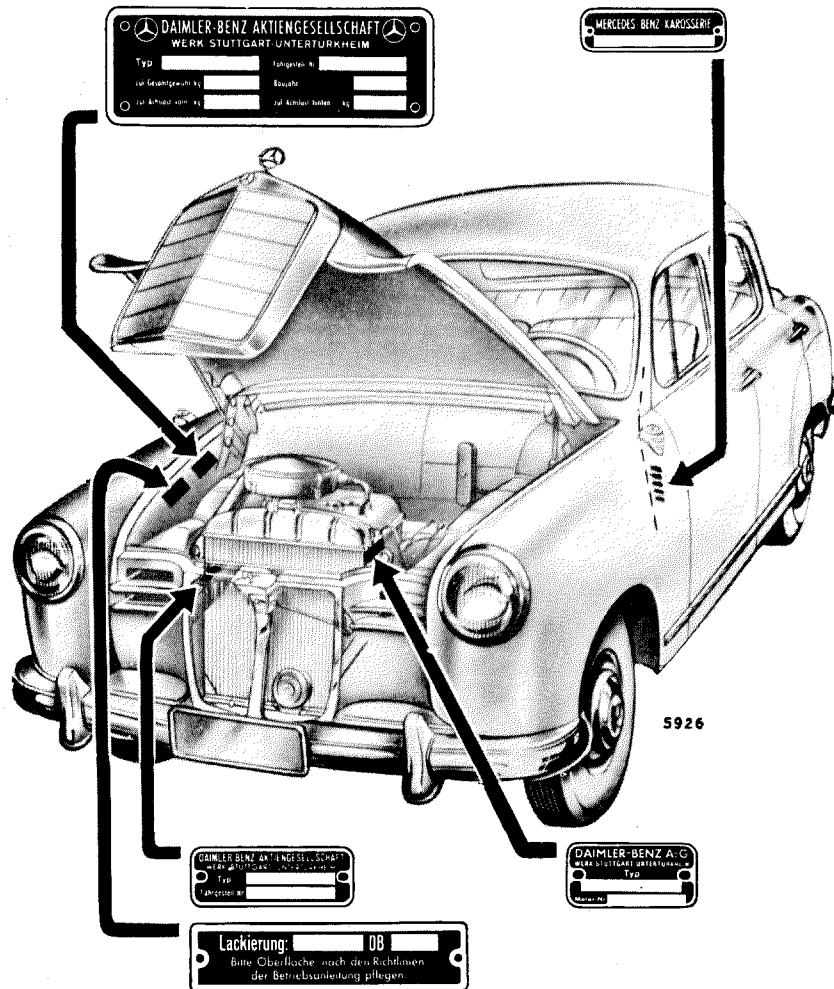
**We ask you to consider it your duty to ensure that the Workshop Manual and the current supplementary sheets are at all times available to the skilled mechanics in your workshops, and that individual sections are dealt with and discussed in your training program.**

Unfortunately, our request that you send us suggestions and hints on changes you would like made has met with little or no response. We should like once again to ask for your cooperation in making this Workshop Manual as useful and as closely related to practical needs as possible.

**Daimler-Benz Aktiengesellschaft**  
Export-Service

Stuttgart-Untertuerkheim, December 1957.

# Location of Model Plate Engine Number and Chassis Number



To ensure prompt and correct execution of your orders and enquiries, please let us have the following details:

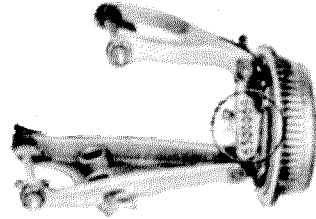
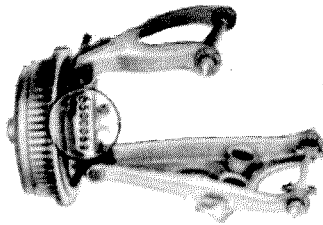
1. Complete chassis number
2. Complete engine number
3. Complete body number
4. Mileage covered

# Location of Unit Numbers

In your enquiries and orders referring to specified car units, please quote the unit serial numbers as well.

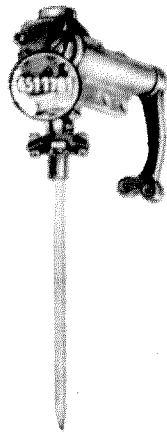
## Front Axle Number

on steering knuckle left and right



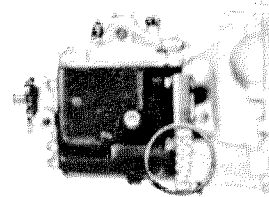
## Steering Gear Number

punched on steering-gear housing



## Transmission Number

punched on transmission case



## Rear Axle Number

punched on lower part of rear axle housing

